

EMILIA ROMAGNA GIOVANISSIMI

0 2

PIEMONTE GIOVANISSIMI

15' Sapone, 70'+1 Masella

Sunday | 14 April 2019 | 9:30

LINEUPS

Coach **Gianpaolo Barbieri**

POLLINI 1

BERTI 3

CAUTIERO 5

CICOGNANI 7

COTRUFO 8

FODERARO 10

MANGHI 11

PIERACCINI 14

PONTELLINI 15

PUNGELLI 16

ROSSI 19

BENCH

AZZI 2

CAFFARRA 4

CECERE 6

ESPOSITO 9

MARCHETTA 13

RAVAIOLI 17

ROMANCIUC 18

ROVERAN 12

TONZIELLO 20

Coach **Giorgio Tonino**

1 BELLUCCI

2 ARDUINO

4 CHIARIA

6 D'ELIA

7 GUARNIERI

8 IOSIF

9 MACANTHONY

13 PERETTI

16 ROMANO

17 SAPONE

19 VANDER ELST

BENCH

12 BELTRAMI

3 CEDOLONI

5 D'ATTOLI

10 MARRAS

11 MASELLA

14 PIPICELLA

15 PITONI

18 SOTTIL

20 VIANO

GENERAL STATS

FIRST/SECOND HALF COMPARISON

EMILIA ROMAGNA GIOVANISSIMI

| | | |
|-------|-------------------|-------|
| 0 | Assists | 0 |
| 1 (1) | Shots (on target) | 1 (0) |
| 0 | Corners | 0 |
| 1 | Yellow cards | 0 |
| 0 | Red cards | 0 |
| 0 | Offsides | 0 |
| 0 | Substitutions | 7 |

TOTALS

EMILIA ROMAG... PIEMONTE GIO...

| | | |
|-------|---------------------|-------|
| 64 | Ball possession (%) | 36 |
| 0 | Assists | 1 |
| 2 (1) | Shots (on target) | 3 (2) |
| 0 | Corners | 0 |
| 1 | Yellow cards | 2 |
| 0 | Red cards | 0 |
| 0 | Offsides | 0 |
| 7 | Substitutions | 4 |

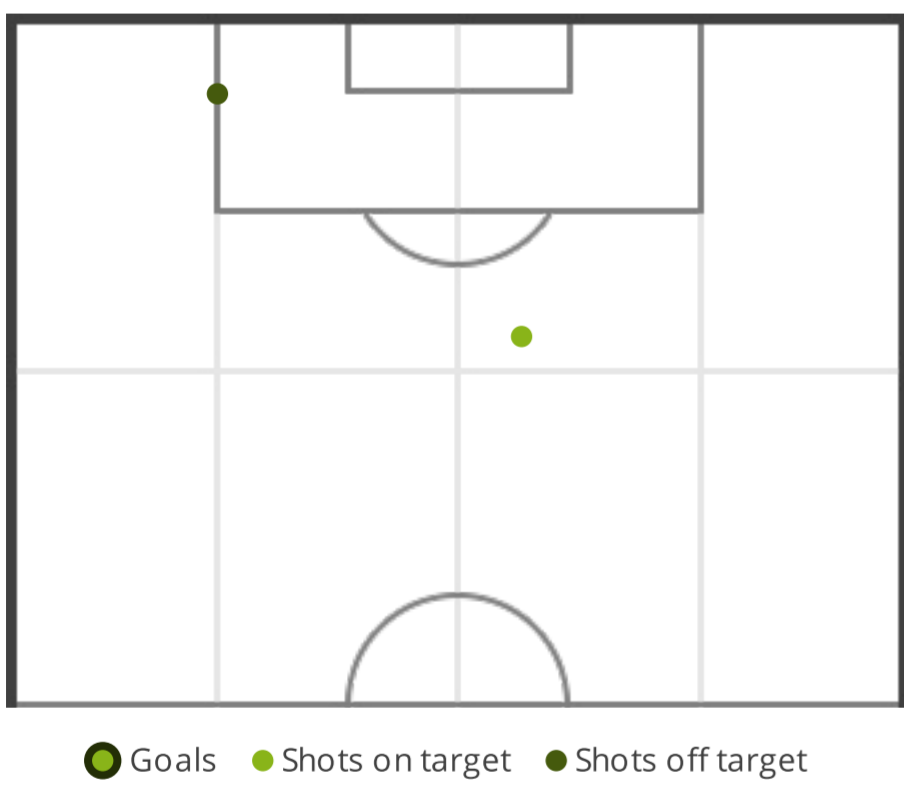
FIRST/SECOND HALF COMPARISON

PIEMONTE GIOVANISSIMI

| | | |
|-------|-------------------|-------|
| 1 | Assists | 0 |
| 2 (1) | Shots (on target) | 1 (1) |
| 0 | Corners | 0 |
| 1 | Yellow cards | 1 |
| 0 | Red cards | 0 |
| 0 | Offsides | 0 |
| 0 | Substitutions | 4 |

SHOTS STATS

POSITIONS



FIRST HALF

| | | |
|-------|------------------------------|--------|
| 1 (1) | Shots (on target) | 2 (1) |
| 25.2 | Shots - average distance (m) | 10.02 |
| 35'0" | 1 shot every (mins) | 17'30" |



% shots on target



SECOND HALF

| | | |
|-------|------------------------------|-------|
| 1 (0) | Shots (on target) | 1 (1) |
| 19.54 | Shots - average distance (m) | 0 |
| 35'0" | 1 shot every (mins) | 35'0" |



% shots on target

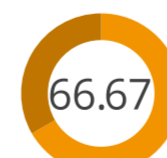


TOTALS

| | | |
|-------|------------------------------|--------|
| 2 (1) | Shots (on target) | 3 (2) |
| 16.86 | Shots - average distance (m) | 8.84 |
| 35'0" | 1 shot every (mins) | 23'20" |

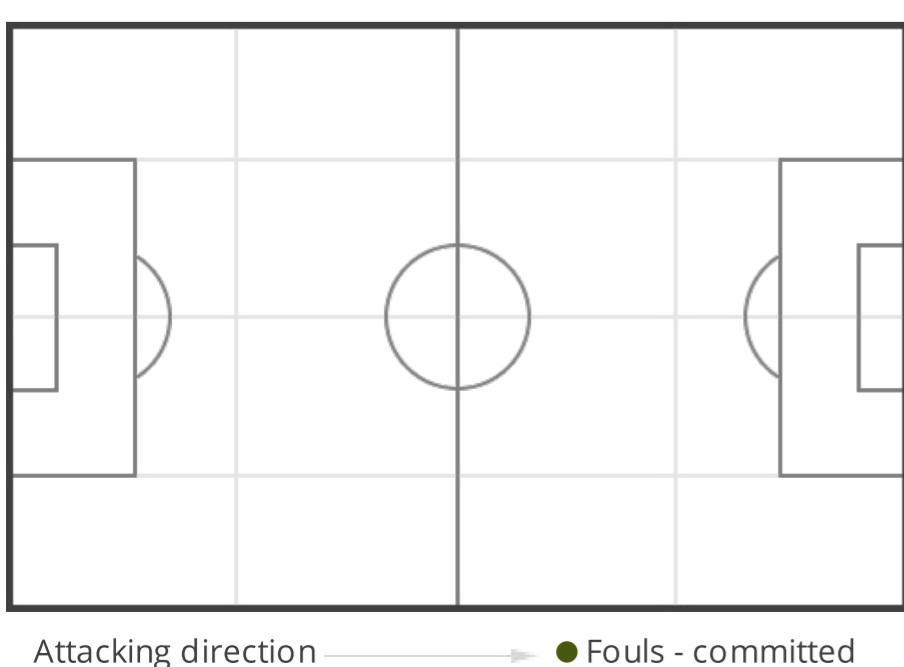


% shots on target



FOULS

POSITIONS



FIRST HALF

| | | |
|---|-------------------|---|
| 0 | Fouls - committed | 0 |
| 0 | Fouls - suffered | 0 |

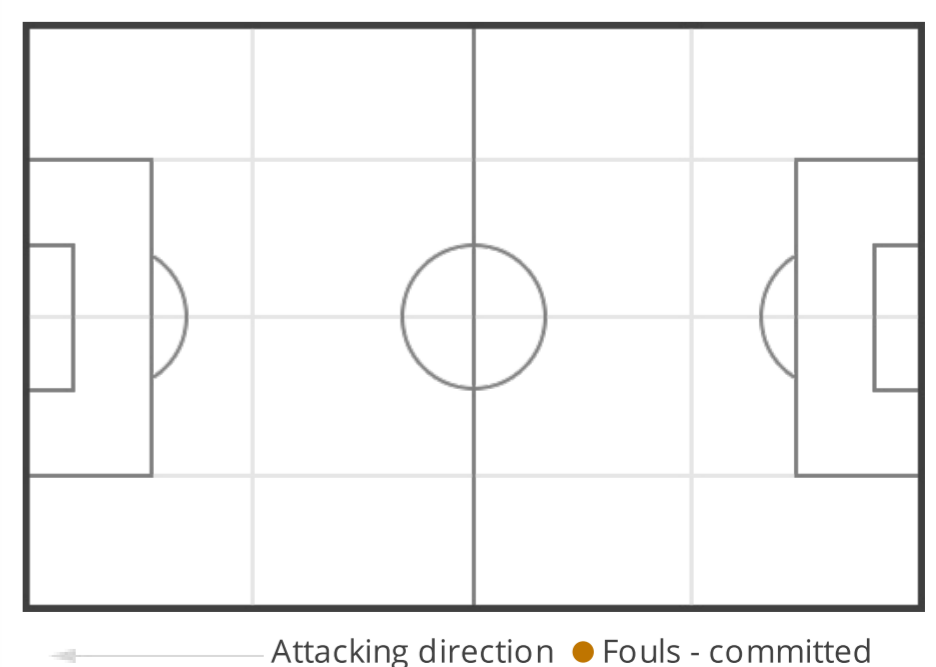
SECOND HALF

| | | |
|---|-------------------|---|
| 0 | Fouls - committed | 0 |
| 0 | Fouls - suffered | 0 |

TOTALS

| | | |
|---|-------------------|---|
| 0 | Fouls - committed | 0 |
| 0 | Fouls - suffered | 0 |

POSITIONS



See all match details on:

goal.sh/m/wiskw222b