

EDGWARE TOWN FC

48' McCluskey

Saturday | 30 November 2019 | 16:00



AYLESBURY VALE DYNAMOS

26' Gaspar , 74' Fitzgerald

LINEUPS

Coach **Fergus Moore**

- SIDDALL 1
- SHIRLEY-CLARKE 2
- BEECH 3
- FLANNERY 4
- MCCLUSKEY 5
- TAYLOR 6
- HARSINI 7
- PETT 8
- PAGE 9
- CARRUTHERS 10
- BENAVIDES 11
- BURGESS 12
- OFORI 14
- AMOAH 15
- MOORE 16

84'

53'

23'

78'

67'

BENCH

78'

67'

53'

Coach

- 1 WEATHERILL
- 2 SCOTT
- 3 GASPAR
- 4 MCATEER
- 5 WILSON
- 6 CARBY
- 7 MERRIDAN
- 8 FITZGERALD
- 9 GILL
- 10 BALDWIN
- 11 TOUCEDA
- 12 BRITO
- 13 FEYI
- 14 BYRON
- 15 KHAN
- 16 CLARKE

BENCH

GENERAL STATS

FIRST/SECOND HALF COMPARISON

EDGWARE TOWN FC

0	Assists	1
4 (4)	Shots (on target)	8 (6)
1	Corners	4
1	Yellow cards	1
0	Red cards	0
3	Offsides	2
0	Substitutions	3

TOTALS

EDGWARE TOW... AYLESBURY VA...

1	Assists	0
12 (10)	Shots (on target)	12 (6)
5	Corners	4
2	Yellow cards	0
0	Red cards	0
5	Offsides	0
3	Substitutions	0

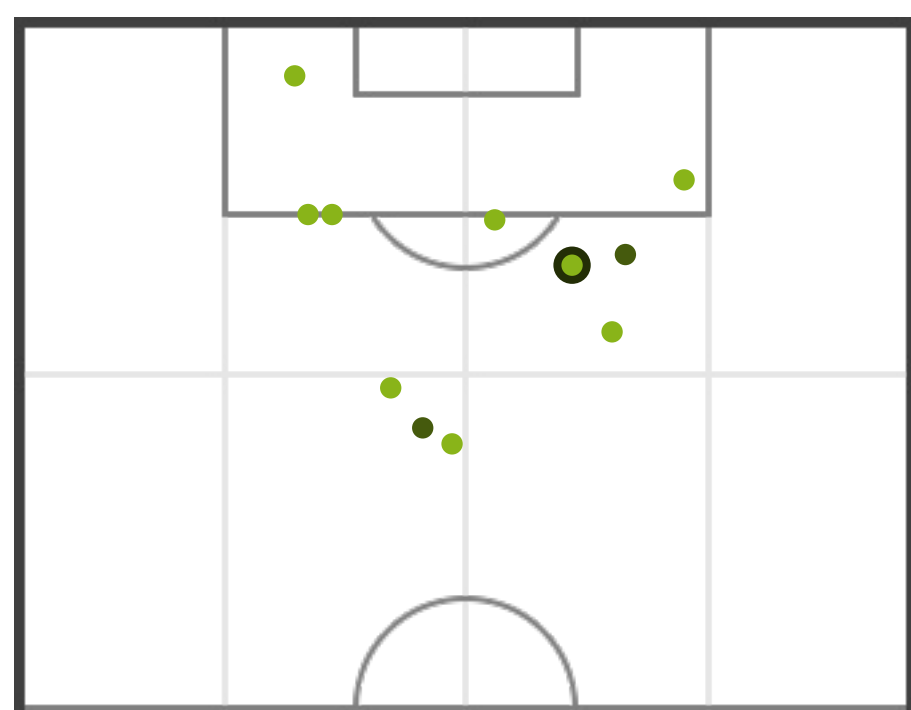
FIRST/SECOND HALF COMPARISON

AYLESBURY VALE DYNAMOS

0	Assists	0
7 (4)	Shots (on target)	5 (2)
3	Corners	1
0	Yellow cards	0
0	Red cards	0
0	Offsides	0
0	Substitutions	0

SHOTS STATS

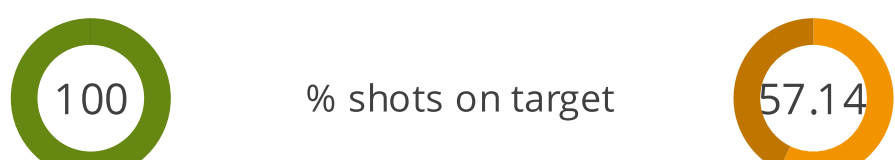
POSITIONS



● Goals ● Shots on target ● Shots off target

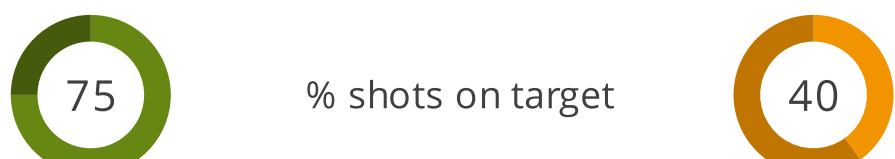
FIRST HALF

4 (4)	Shots (on target)	7 (4)
16.49	Shots - average distance (m)	17.65
11'15"	1 shot every (mins)	6'26"



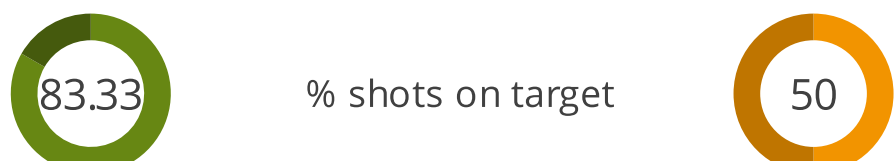
SECOND HALF

8 (6)	Shots (on target)	5 (2)
22.16	Shots - average distance (m)	26.41
5'38"	1 shot every (mins)	9'0"

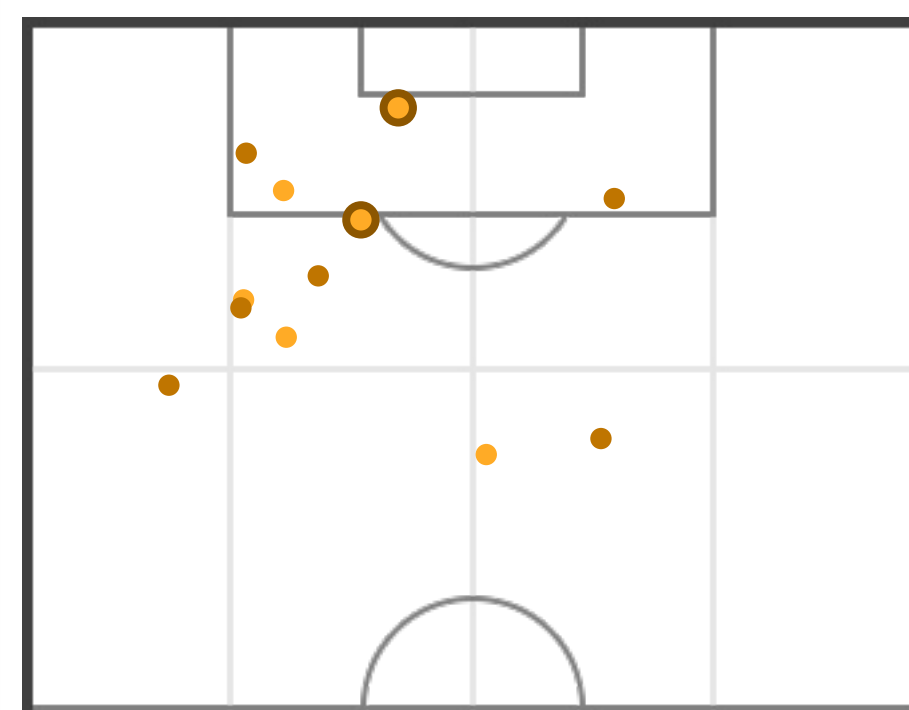


TOTALS

12 (10)	Shots (on target)	12 (6)
18.56	Shots - average distance (m)	24.39
7'30"	1 shot every (mins)	7'30"



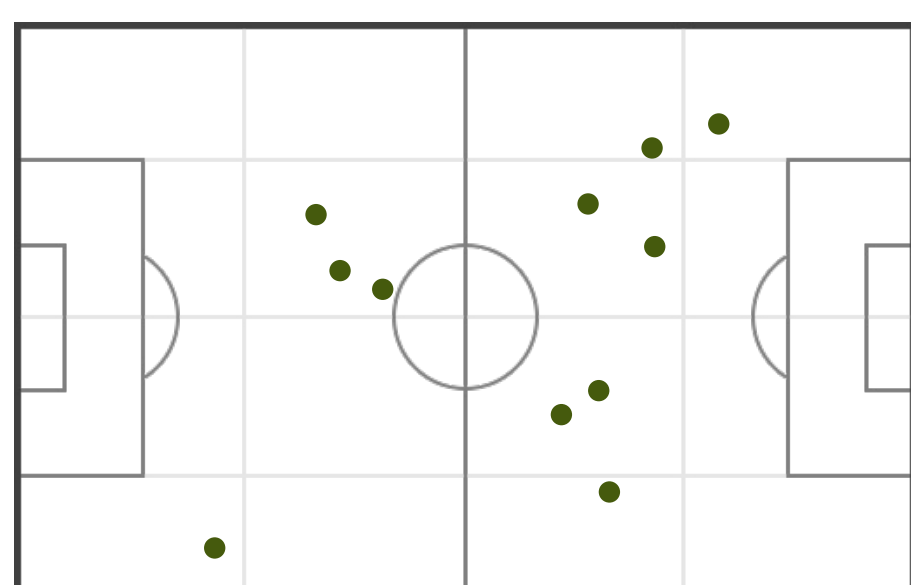
POSITIONS



● Goals ● Shots on target ● Shots off target

FOULS

POSITIONS



Attacking direction → ● Fouls - committed

FIRST HALF

5	Fouls - committed	7
7	Fouls - suffered	3

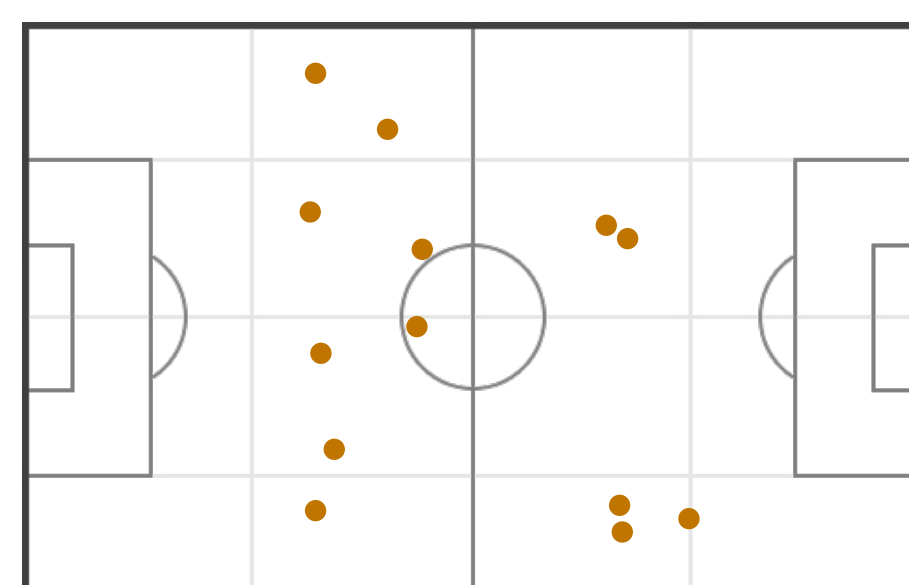
SECOND HALF

6	Fouls - committed	6
6	Fouls - suffered	5

TOTALS

11	Fouls - committed	13
13	Fouls - suffered	8

POSITIONS



← Attacking direction ● Fouls - committed

See all match details on:

goal.sh/m/n227w222b